

# The Passage Assessment Database (PAD), a Tool for Stream Habitat Connectivity Restoration via the Publicly Available CalFish Website

**Passage Assessment Database (PAD)** is an ongoing map-based inventory of fish passage assessments related to anadromous fish passage in California, compiled and maintained through a cooperative interagency agreement. It is an important tool for determining and tracking the outcomes of passage improvement projects.

The PAD compiles and standardizes data from more than one hundred agencies, organizations, landowners and individuals.

## What's New to PAD?

- New PAD data standards making the data more robust.
- New form for providing updates: <http://www.calfish.org/portals/0/Programs/FishPassage/ProvideUpdatesToPad.pdf>

## What's Coming?

- Passage status prior to removal
- "Barrier Removed By" field
- Species benefited from barrier removal

## Accomplishments over the past year:

- 322 new PAD records
- 3,777 updated PAD records

## Current Status of PAD:

1,959 Total Barriers  
2,710 Partial Barriers  
4,992 Unscreened Diversions  
19,588 Total Records

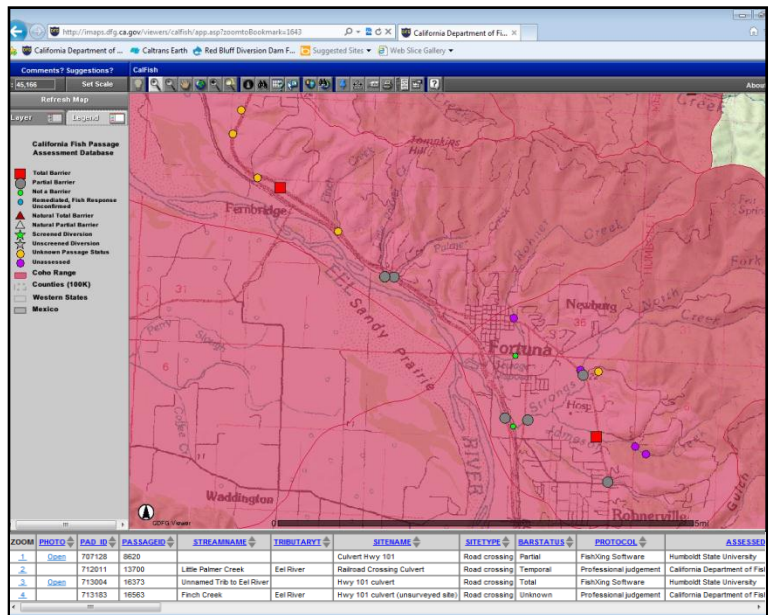
Feedback regarding the accuracy and updates of the PAD data are welcome. Please contact

Anne Elston  
PSMFC  
(916) 327-3937  
[Anne.Elston@wildlife.ca.gov](mailto:Anne.Elston@wildlife.ca.gov)

## Accessibility

PAD can be accessed through [www.calfish.org](http://www.calfish.org)

The **CalFish Map Viewer**, a web-based mapping application, can be used to display passage barrier sites, and query and export specific details about individual fish barrier sites. The map viewer allows analysis of fish passage sites in relation to each other and other available aquatic datasets, in the context of the whole watershed. The interface includes the capability to print custom maps. *Update frequency: quarterly*



The PAD shapefile can be downloaded from CalFish's **Data Downloads** page. The PAD download is near the top of the Habitat/Physical tab of the Data Downloads page. *Update frequency: quarterly*

The **PAD Data Review & New Barrier Mapping Application** allows editing and review of existing information for use in planning or project development efforts to improve fish passage. *Update frequency: quarterly*

The **PAD Data Portal** is a tabular data tool used to query and export details about PAD barriers (e.g., coordinates). The tool links to reference documents and a map view of individual barriers. The data portal is hosted by the California Department of Fish and Wildlife on their webpage and can be accessed through CalFish. *Update frequency: daily*



# CALFISH

A CALIFORNIA COOPERATIVE ANADROMOUS FISH AND HABITAT DATA PROGRAM

[www.calfish.org](http://www.calfish.org)

## CalFish Mission Statement

- Create, maintain, and enhance high quality, consistent data that are directly applicable to policy, planning, management, research, and recovery of anadromous fish and related aquatic resources in California.
- Provide data and information services in a timely manner in formats that meet the needs of users.

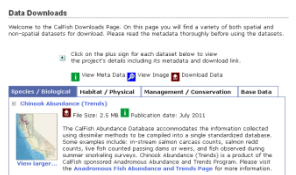
## Accessing CalFish Data



- View geographic data through the CalFish Map Viewer hosted by the California Department of Fish and Wildlife (CDFW).



- Query tabular data through tools created and maintained by Pacific States Marine Fisheries Commission (PSMFC) and CDFW.



- Download CalFish datasets in shapefile format.

## CalFish Datasets

CalFish gathers data from many different sources while maintaining core standards.

*Datasets Currently Available Include:*

- Chinook abundance, range, ESU, and critical habitat.
- Coho abundance, range, distribution, and ESU.
- Steelhead abundance, range, distribution, DPS, and critical habitat.
- Passage Assessment Database.
- A variety of California hydrography.
- Locations of Fisheries Restoration Grant Program funded project sites.
- Stream habitat reach summary data.
- CDEC weather gauging station locations.
- USGS gauging station locations.
- Nonindigenous species observation data.
- CEDEN environmental and water quality stations.
- CDWR Water Data Library water quality stations.
- Fire perimeter data.
- National Fish Habitat Action Plan habitat condition indices.
- Vegetation distribution.
- Map based search for NOAA Authorizations and Permits for Protected Species.
- Protected areas datasets.

## Getting Started With CalFish

A variety of resources are available through the CalFish Getting Started page that will help make using CalFish easier. These include tutorials, the data explorer tool, FAQ, data tracking report, map viewer bookmarks, site map, and resources page.

## CalFish Steering Committee

The CalFish Steering Committee and Cooperators provide the program with leadership, direction, and advice. This



cooperative support ensures the longevity and continued usefulness of the CalFish site.

For more information please visit

[www.calfish.org](http://www.calfish.org)

or contact Laura Ryley PSMFC

[laura.ryley@wildlife.ca.gov](mailto:laura.ryley@wildlife.ca.gov)

(831) 649-7142