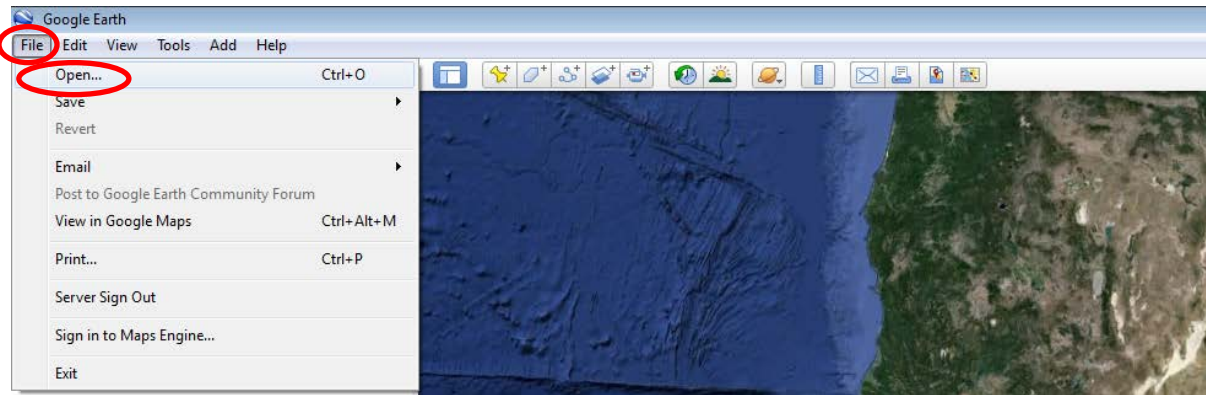
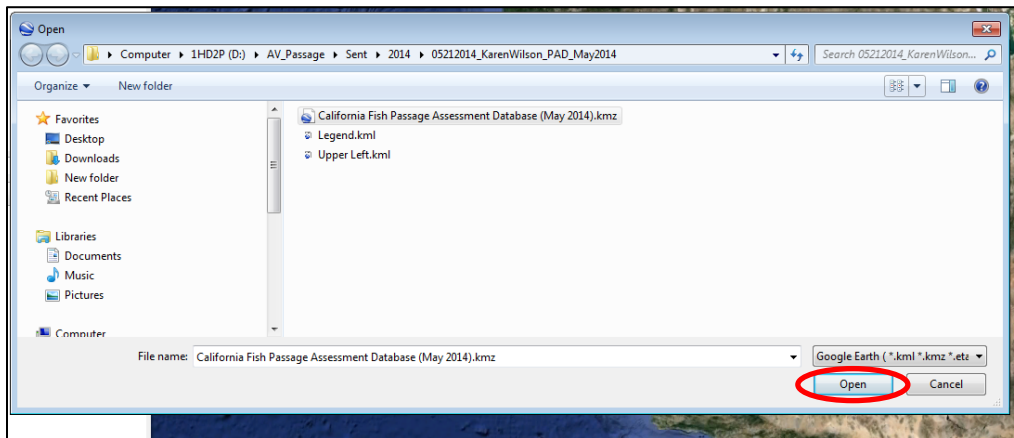


Google Earth Instructions:

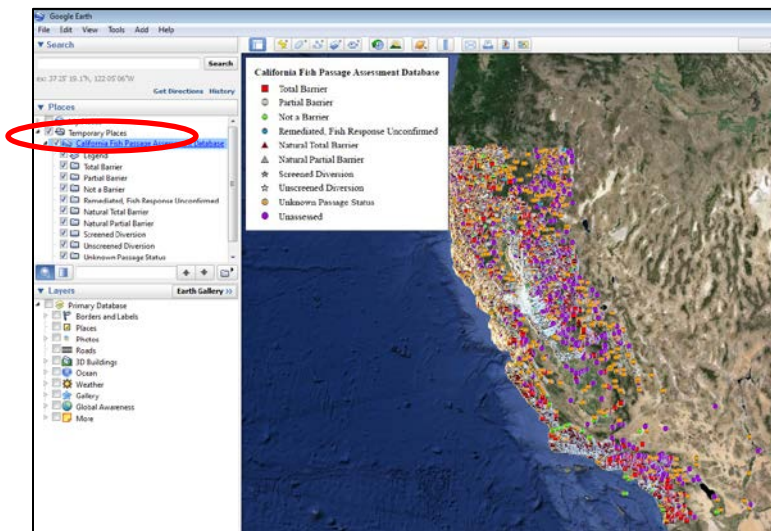
1. Open the Passage Fish Passage Assessment Database (PAD) Google Earth (GE) file in GE. Click on File, then Open.



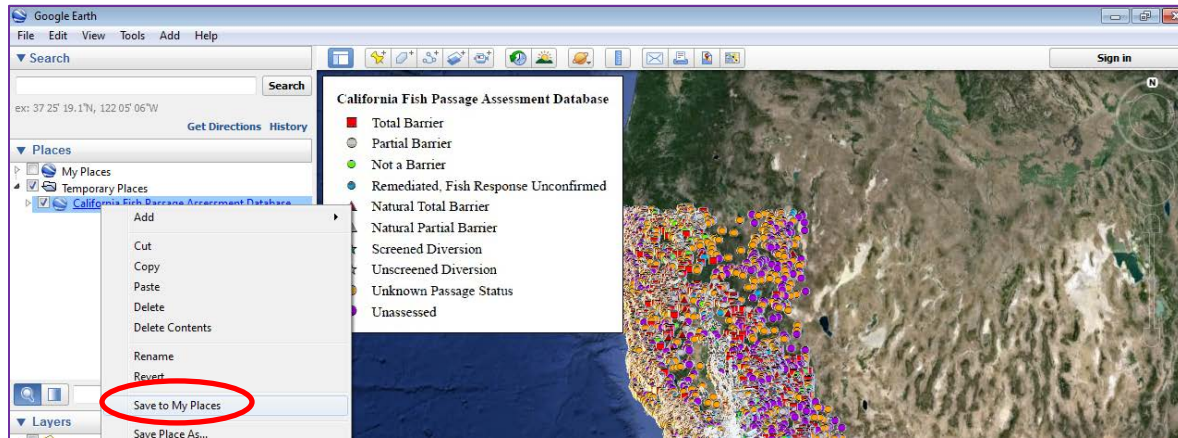
2. Navigate to location of the PAD kmz file on your desktop and click open in the pop-up window.



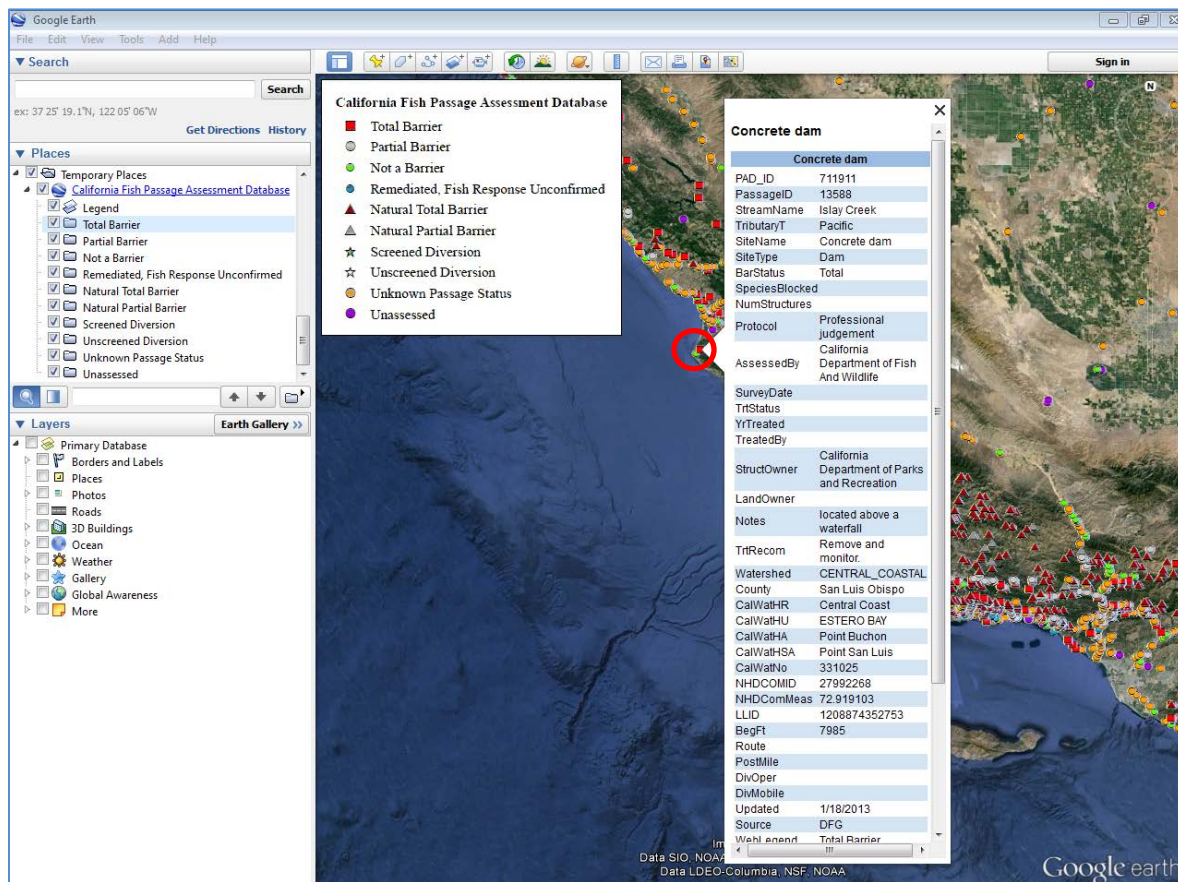
3. The PAD file will open in your tempory places, and to save the file for use later save it to your places (#4).



4. Save to "My Places".

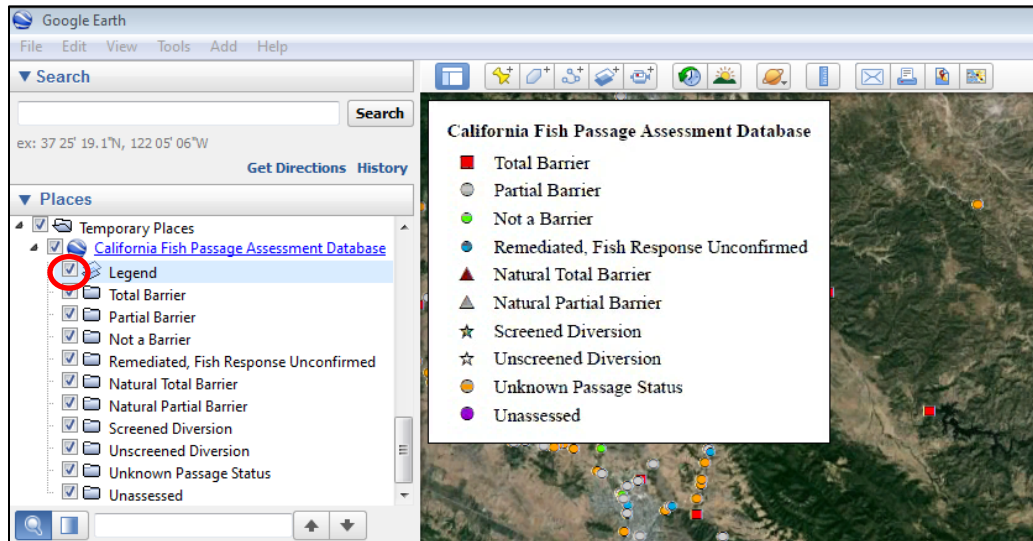


5. Click on a PAD point to open up barrier attributes. It is advisable to zoom into the map prior to clicking on one of the PAD points, since there are many.

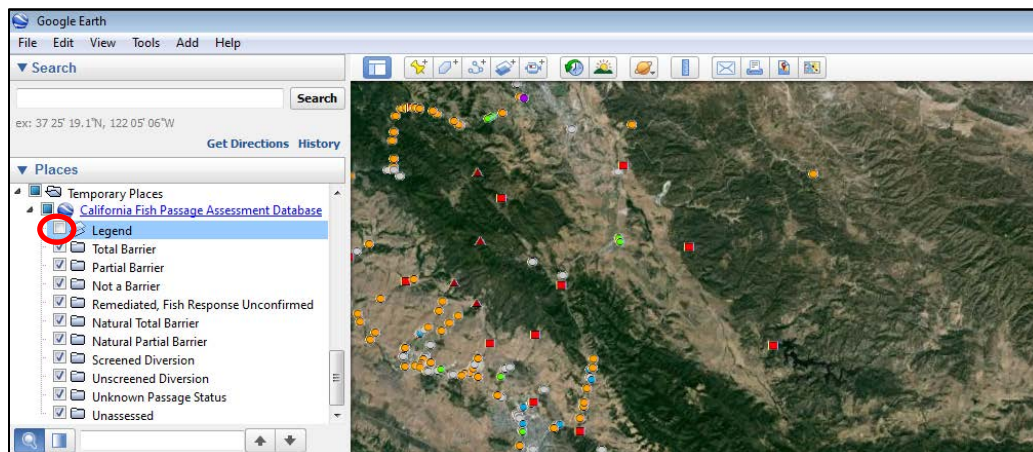


6. Turn off PAD legend or folders (i.e., “not a barrier”, “screened diversions”, etc.) by unclicking the items/folders.

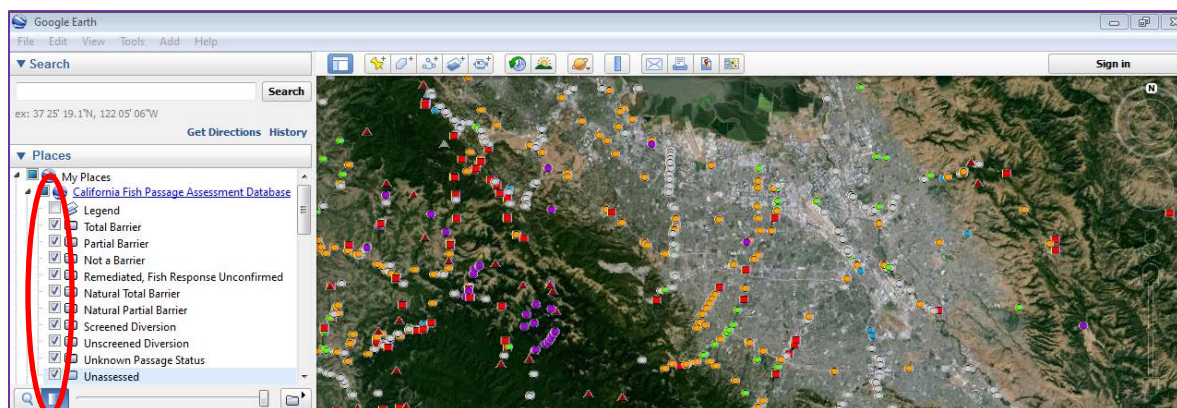
Before turning off the legend:



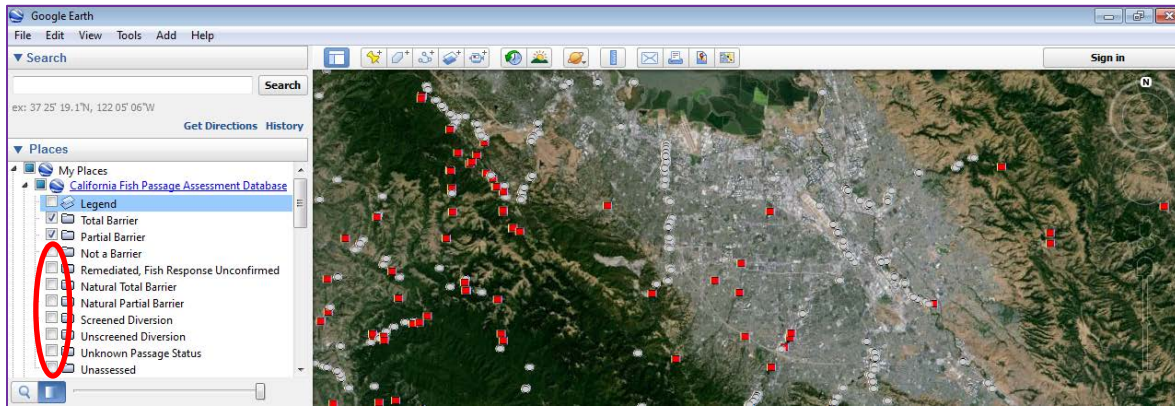
After turning off the legend:



Before turning off all folders except for total and partial barriers:

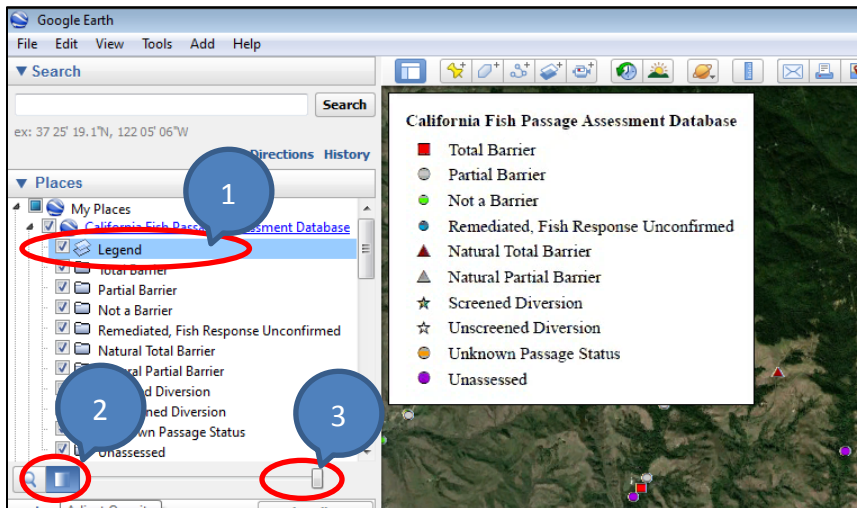


After turning off all folders except for total and partial barriers:



7. Change the transparency of the PAD legend. Highlight the legend in blue by clicking on the name. Click on the transparency icon and use the slider to change the transparency.

Before:



After:

